

# *QMF Analytics v11: Not Your 'Green Screen' QMF*

**Central Ohio Db2 Users Group – CODUG  
December 5, 2017**

**Roger Midgette – The Fillmore Group  
Frank Fillmore – The Fillmore Group  
Doug Anderson – Rocket Software**



[roger.midgette@thefillmoregroup.com](mailto:roger.midgette@thefillmoregroup.com)



[frank.fillmore@thefillmoregroup.com](mailto:frank.fillmore@thefillmoregroup.com)



[danderson@rocketsoftware.com](mailto:danderson@rocketsoftware.com)



## Agenda:

- ▶ Brief introduction to The Fillmore Group
- ▶ QMF Analytics for z/OS and Multiplatforms
- ▶ Lake County, IL QMF infrastructure
  - ▶ “It’s never too late!”
- ▶ Leverage your existing QMF assets
  - ▶ Queries, Forms, Procs from legacy QMF
  - ▶ Run with QMF Analytics for z/OS and Multiplatforms
- ▶ Live Demo: QMF Vision



## The Fillmore Group

- ▶ IBM Analytics Software Reseller (LUW and z)
- ▶ IBM Analytics Technical Consulting and Staff Augmentation
- ▶ Aligned with IBM Global Training Partner Arrow ECS
- ▶ Founded in 1987; headquartered in Baltimore, Maryland





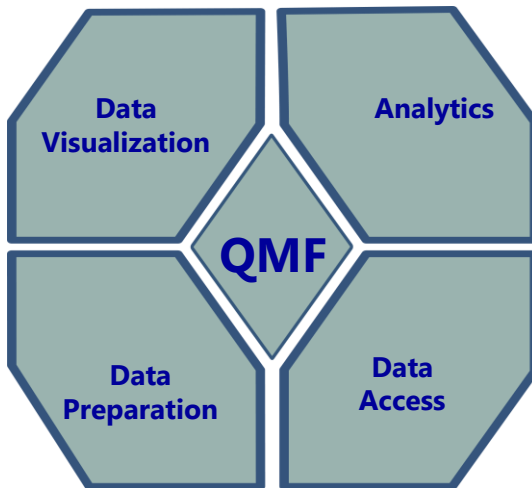
## Frank Fillmore

- ▶ Founder and President of The Fillmore Group
- ▶ DB2 Gold Consultant
- ▶ IBM Champion for Analytics
- ▶ **Over 35,000 billable hours supporting DB2!**



# QMF Analytics for z/OS and Multiplatforms

Bringing the power of QMF on z/OS to the LUW platform



## Analytics

Enterprise BI Solution for z/OS and non-z/OS platforms  
Can leverage existing QMF and DataQuant queries  
Web, workstation, mobile



## Data Visualization

Dashboard creation for any user - simplicity  
Join data from multiple data sources in one query



## Data Preparation

Data from multiple data sources can be easily readied for any application

## Data Access and Virtualize

Access to relational non-z/OS data sources via JDBC  
Excel, Hadoop, and Web Services  
Discover schema and build SQL



## QMF's simplicity transforms any user into a business analyst

### Access all data for intuitive reports and dashboards

- No need for data cubes or data transformation
- Straightforward security for data and user access
  - Security and governance is per user and per data source
  - Different data sets can be made accessible for different access and different users
- *Ad hoc* querying is quick. One query to multiple data sources
- Drill data visually with QMF dashboards or reports

### Integrated Solution

- Data Visualizer with QMF Vision interface
- Transform and prepare data with workstation or web interface
- Collaboration capability for instant sharing of analytics across the enterprise
  - Integration with Watson Workspace and IBM Connections
- Powerful reporting and federation
  - Drill downs, KPIs, dashboards, graphical reports, report scheduling

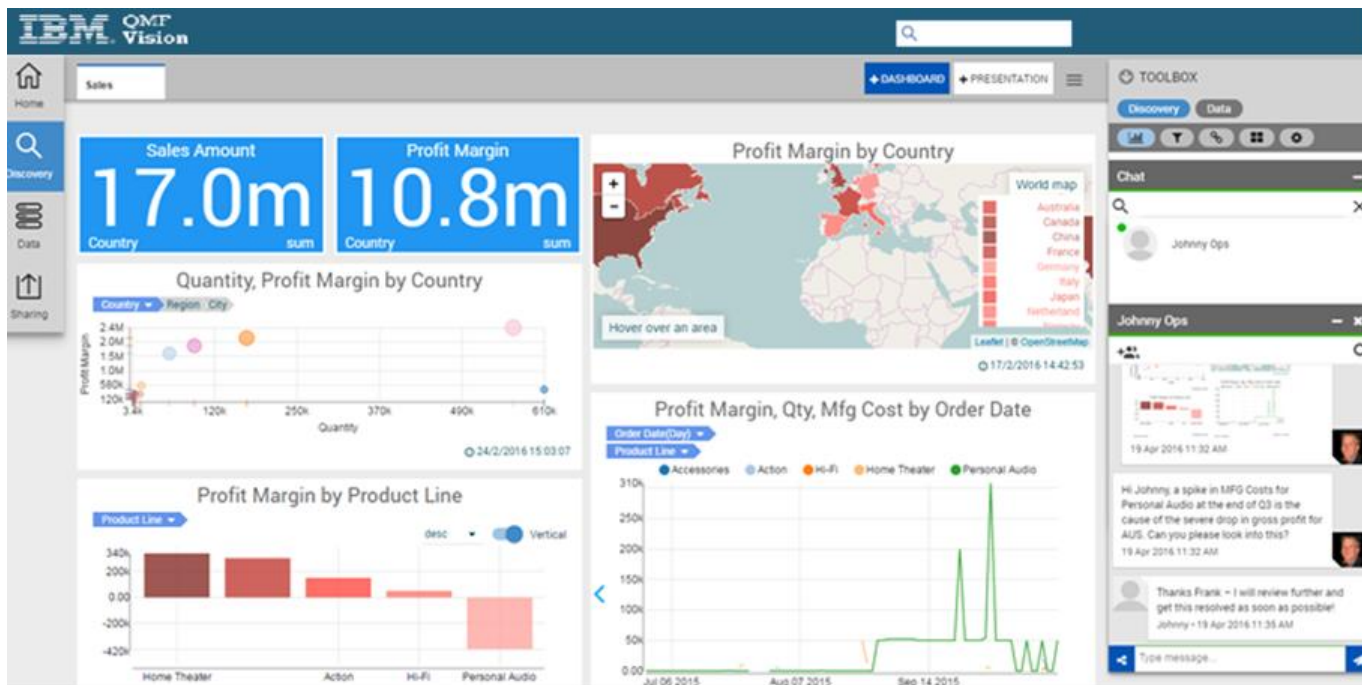
## Business Analytics that makes economic sense

Priced for what you use, without regards for user access

- Price is based on data source
  - No user based pricing
  - Deployment can be to a handful of users or millions of users – price not affected
  - Rollout self-service analytics to every user in the enterprise cost-effectively
- Example:
  - Customer is planning to deploy across a 12-node WebSphere cluster serving 10,000 users. QMF will serve reports and dashboards that draw from Db2 and SQL Server on the windows platform.
  - Price is based solely on the value units associated with the processor cores running Db2 and SQL Server

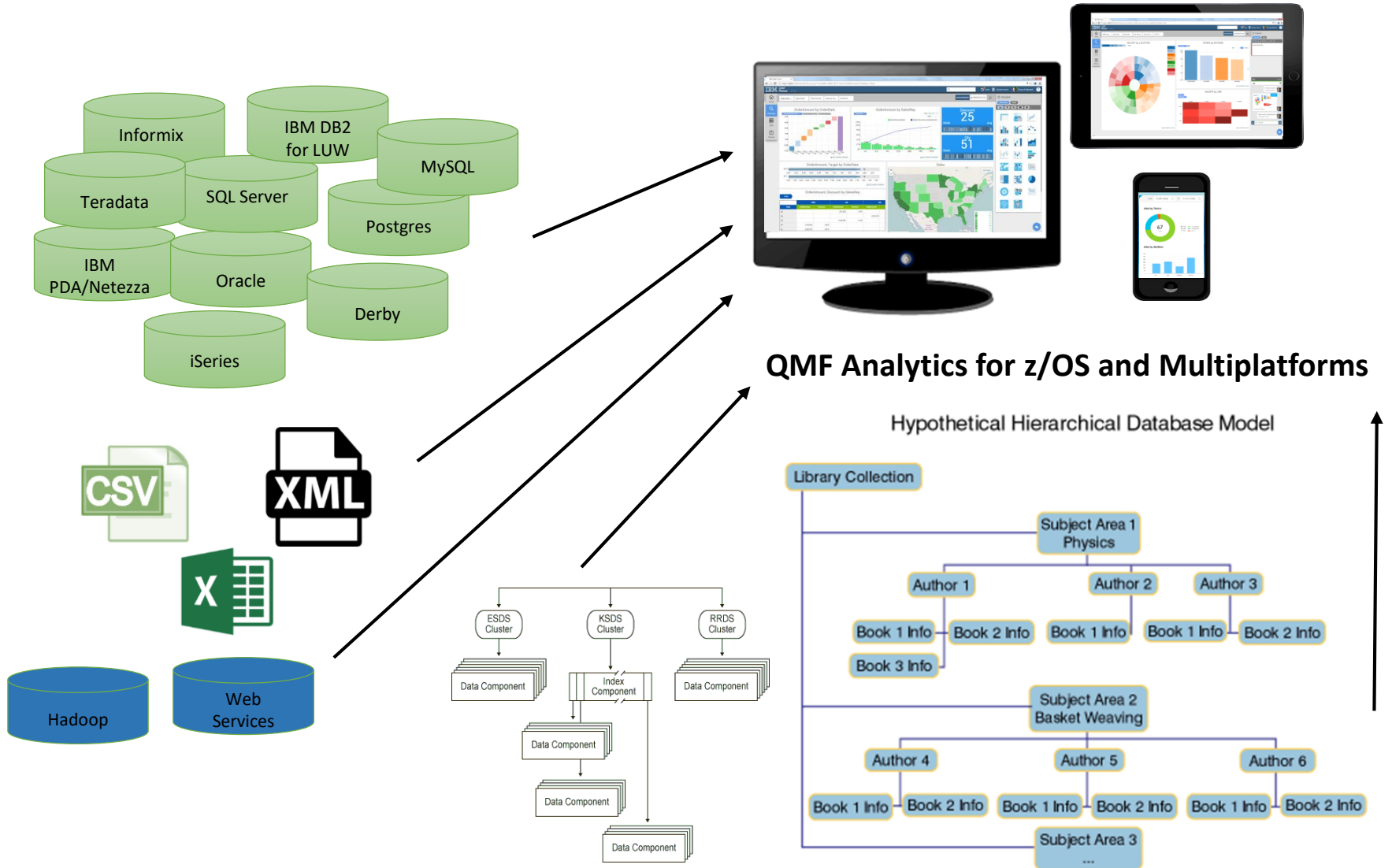
# QMF - Powerful visualizations created through an intuitive interface

- Create visualizations using our simple interface, as easy as creating a Power Point!
- Instantly share dashboards with team members
- Collaborate on issues, outliers and actions





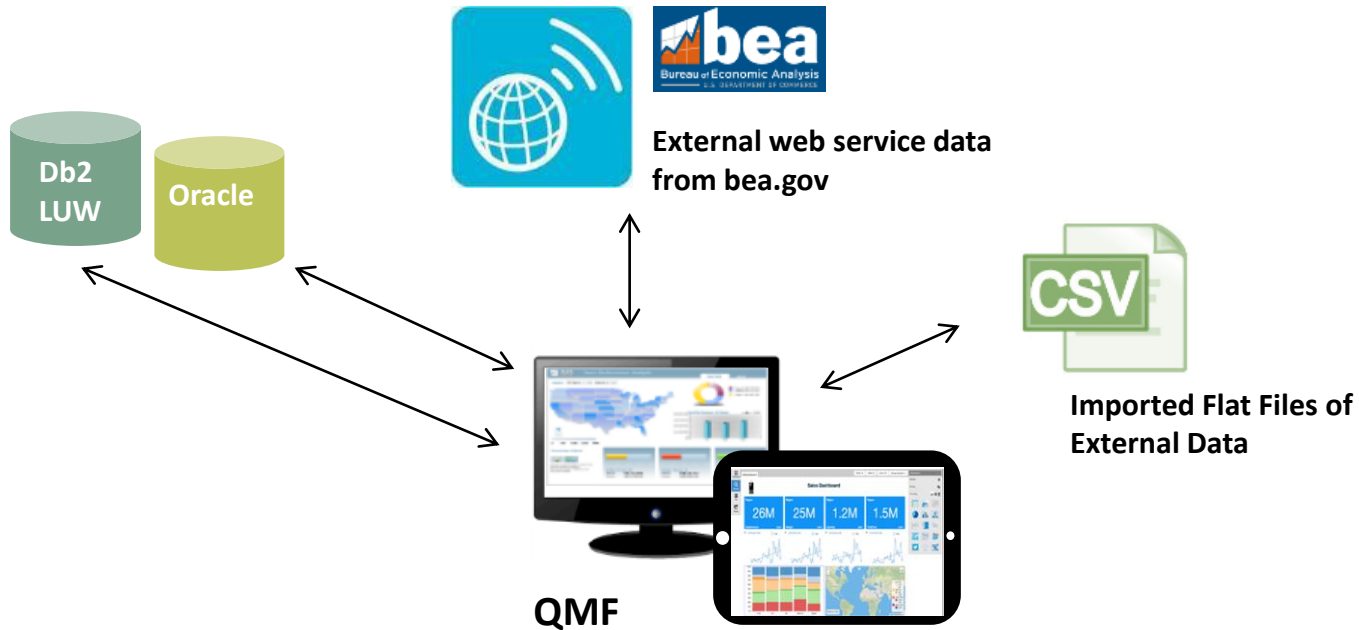
# Federation across structured and unstructured data



# QMF Analytics for Multiplatforms use case: Exploiting analytics across multiple data sources

Analyze data from multiple, disparate distributed data sources to drive sales strategy and execution at a global distributor

- Oracle (Employee Sales Data)
- Db2 LUW (Sales and Customer Data)
- External web service data (bea.gov – live feeds of population and income data)
- Imported flat files of external data (National Federation Stats of sports participation rates by geography, etc.)



## QMF for Workstation vs. QMF for WebSphere Clients

- Enhanced visual design capabilities
- Enhanced drill-down editing capabilities
- Customizable perspectives and views
- Document editing capabilities
- Support for REXX programming language
- Targeted printing capabilities
- Table editing support in the data analysis grid
- Seamless procedure-run EXPORT command



[https://www.ibm.com/support/knowledgecenter/en/SS9UMF\\_12.1.0/gim/gim/tpc/dsq\\_wrkstn\\_qmf\\_websph.html](https://www.ibm.com/support/knowledgecenter/en/SS9UMF_12.1.0/gim/gim/tpc/dsq_wrkstn_qmf_websph.html)



## Lake County, IL Courts (old)

- ▶ QMF for VM v7.2
- ▶ QMF for Windows v7.2
- ▶ DB2 Server for VM v7.5
  
- ▶ Dozens of users (including power-users)
- ▶ QMF is an integral part of daily processing





```

msc6 - Remote Desktop Connection
-----
Licensed Materials - Property of IBM
5675-DB2 5697-F42 (C) Copyright IBM Corp. 1982, 2002
All Rights Reserved.
IBM is a registered trademark of International Business Machines
-----

QMF HOME PANEL
Version 7 Release 2

Authorization ID
XADRXM

Connected to
LCRIMDEV

Query Management Facility

***** ** ** *****
** ** *** ** **
** ** **** **** *****
** ** * * * * * **
** * * * * * **
***** ** ** ** **
**
-----

Enter a command on the command line or press a function key.
For help, press the Help function key or enter the command HELP.

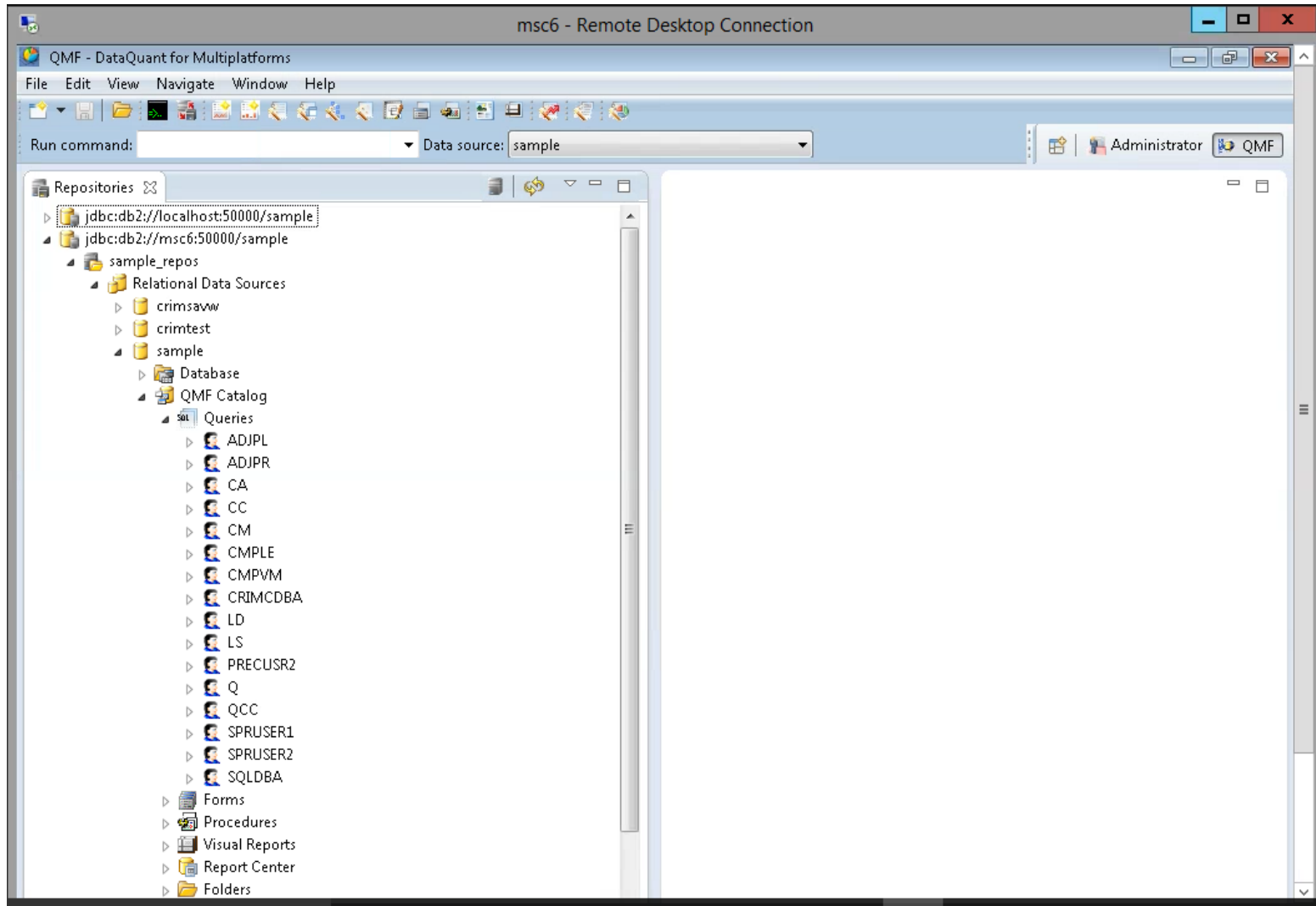
-----
1=Help      2=List      3=End      4=Show      5=Chart      6=Query
7=Retrieve  8=Edit Table  9=Form     10=Proc     11=Profile   12=Report
OK, CONNECT performed. Please proceed.
COMMAND ==> _
-----
24x80 Ready (1) 10.3.202.1 TN3270 17:17:32 4/23/2017 NUM 00:02:30 24,015
  
```



## Lake County, IL Courts (new)

- ▶ QMF for VM v7.2
- ▶ QMF for Workstations (DataQuant) v11.1
- ▶ DB2 for Linux for System z v11.1
  
- ▶ Design Point:
  - ▶ Functional equivalence – regardless of UI







## The “Easter Egg Hunt”

- ▶ QMF metadata (Queries, Forms, Procs)
  - ▶ Resided in multiple DB2 Server for VM databases
  - ▶ Had to be merged into new DB2 for LUW database with different metadata tables

By configuring a data source to access a QMF catalog, you can retrieve any QMF objects that have been saved in an existing QMF catalog. You can also save any QMF objects that you might create to a QMF catalog. This allows you to share and use objects regardless of the application version or platform that was used to create the QMF object.





## The Value Proposition

- ▶ The Design Point was successfully achieved!
- ▶ One hour long online training session
  - ▶ Users familiar with QMF for Windows or QMF for VM v7.2
  - ▶ Recorded and saved for reference, new users
- ▶ Just beginning to exploit new feature/functionality
- ▶ Pricing on Integrated Facility for Linux (IFL):
  - ▶ 100 Processor Value Units (PVUs)





## Resources

- ▶ QMF Best Practice: The Painless QMF Migration
  - ▶ Install, configure, rollout
  - ▶ [https://www.youtube.com/watch?v=T\\_kGRmXw7Jg](https://www.youtube.com/watch?v=T_kGRmXw7Jg)
- ▶ QMF v12.1 documentation
  - ▶ [https://www.ibm.com/support/knowledgecenter/SS9UMF\\_12.1.0/home/qmfhome.html](https://www.ibm.com/support/knowledgecenter/SS9UMF_12.1.0/home/qmfhome.html)



## QMF Information:

- **YouTube Channel: IBMQMF**  
[https://www.youtube.com/channel/UCZl1PSrK7IPZLWKjljsa\\_gQ](https://www.youtube.com/channel/UCZl1PSrK7IPZLWKjljsa_gQ)
- **QMF in the IBM Marketplace**  
<https://www.ibm.com/us-en/marketplace/db2-qmf>
- **IBM DB2Tools LinkedIn Group (includes QMF)**  
<https://www.linkedin.com/groups/DB2-Tools-z-OS-2821100/about>
- **New QMF Redbook**  
[\*In-Place Analytics with Live Enterprise Data with IBM DB2 Query Management Facility\*](#)





# Thank you

Frank Fillmore, President

Kim May, Vice President Business Development

[www.thefillmoregroup.com/blog](http://www.thefillmoregroup.com/blog)



# Demo of QMF Vision